

A decorative pattern of white teardrop shapes arranged in a grid, filling the right side of the page.

ACTIU

USE AND CARE MANUAL

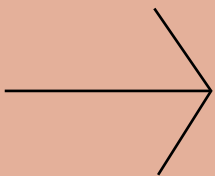
Actiu products are made up of a wide variety of materials, follow the advice described so that your Actiu products are maintained and preserved for a long time like the first day after purchase.

ACTIU guarantees that its products are free from manufacturing and material defects at source. The Actiu guarantee will be required exclusively when the products are used under normal working conditions in offices and administrative work centres, in accordance with the manufacturer's instructions for their installation as well as for their use and maintenance. Therefore, inappropriate cleaning and maintenance of any product may void the material's warranty.



WARRANTY

ACTIU guarantees that its products are free from material defects in origin and manufacturing.



WARRANTY

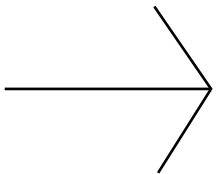
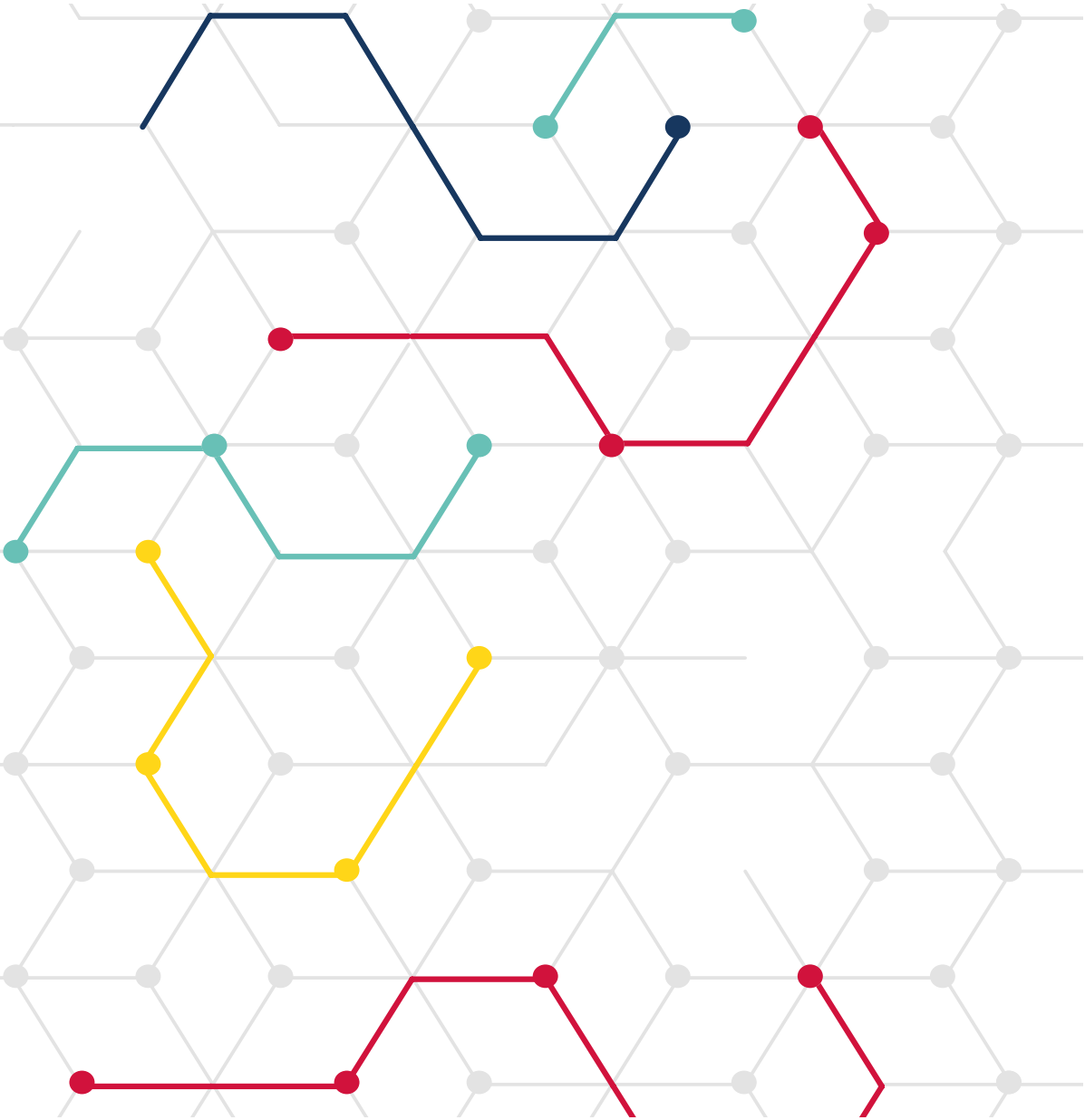
This guarantee will be enforceable exclusively when the products are used under normal working conditions in offices and administrative work centers, in accordance with the manufacturer's instructions for their installation as well as for their use and maintenance.

Likewise, the products manufactured by ACTIU included in the standardised price list have a 5-year continuity guarantee from the date of manufacture. Any substitution or replacement of special products will be subject to specific conditions or a reasonable technical or aesthetic alternative may well be offered. However, ACTIU reserves the right to make the appropriate technical modifications, as well as to offer alternative products that offer a similar functionality to those originally purchased.

This guarantee will be valid from the date the product is made available and covers only the original end user, not being able to be transferred.

Actiu warranty certificate: www.actiu.com/warranty

ENVIRONMENTAL RESPONSIBILITY



ENVIRONMENTAL RESPONSIBILITY

We re-process a high percentage of production losses to obtain 0% waste and material waste as well as energy.

We use recycled materials of origin and from sustainable productions.

We are constantly working to optimise our processes

We promote a 0 Km philosophy working with local partners, thus reducing the carbon footprint.

We work with local partners with the same philosophy.

We are constantly improving to generate minimal waste.

MELAMINE



Maintenance

LIGHT AND RECENT DIRT

Wipe clean with ordinary kitchen paper, a clean soft cloth (dry or damp) or a sponge. In case of wet cleaning, clean with a regular kitchen paper or a microfiber cloth.

IN CASE OF TRACES OR STAINS

The appearance of traces and stains is often due to the use of solvents with cold water and old rags or chamois. To avoid or eliminate these types of traces, it is advisable to rinse with hot water and dry with a kitchen paper or a microfiber cloth.

LESS RECENT NORMAL STAINS

Clean with hot water, clean microfiber cloths or rags, sponges or soft brushes using ordinary cleaning products that do not have abrasive particles, such as black soap or bar soap. Finish with a rinse with clean water and completely remove the cleaning product to avoid the formation of stains. Wipe the surface with a clean cloth or absorbent paper

Products not allowed for cleaning:

- Abrasive and stripping substances (scouring powders, scratchy sponges, steel wool)
- Polishing products, wax, furniture cleaning products, bleaching agents
- Strong acids and products containing acid salts
- Steam cleaning appliances

In case of matt surfaces (ex: ST9)

The matt surfaces give a very natural effect to the eye and to the touch. This finish gives wood designs an authentic veneer effect. As with glossy surfaces or solid wood, certain precautions must be observed when using or cleaning matt surfaces. In general, all common stains can be easily removed as with other surfaces.

The important thing is to always use a soft, even, damp cloth when cleaning. Under no circumstances should abrasive or stripping substances (scouring powders, steel wool), polishing products, wax, furniture cleaning products, bleaching agents or maintenance products containing strong acids and acid salts be used. The use of steam cleaning devices is forbidden.

All these substances, like rough cloths or scratchy sponges, progressively cause irreversible traces to appear, and can even permanently damage the surface in the event of intense rubbing.

Greasy stains must also be cleaned quickly (within a maximum of 48 hours), as they can damage the surface structure.

Desinfection

- ✓ Antibacterial spray
- ✗ Steam
- ✗ Washable at 60°
- ✗ Suitable for bleach use
- ✓ Suitable for alcohol use



Recommendations of use

- ✓ Use coasters under hot objects
- ✓ Do not drag objects, lift them
- ✓ Avoid contact with extremely hot or cold objects
- ✓ Remove and immediately dry any liquid that accidentally falls on the surface.
- ✗ Place a protective envelope to write
- ✗ Use of paper towels. They can scratch the surface
- ✗ Always clean in the direction of the streak
- ✗ Allow liquids to come into contact with the wood
- ✗ Cleaning with abrasive, alkaline, acid, chlorine or solvent products.
- ✗ Use in covered outdoor spaces
- ✗ Withstands sudden changes in temperature

HPL - PAINTABLE SURFACE



Maintenance

Wash regularly with a warm water solution of non-abrasive detergent with a pH between 5 and 8.

Surfaces must be thoroughly rinsed with clean water after washing to remove all residue. All surfaces should be cleaned with a soft cloth / sponge or nothing harder than a soft, natural bristle brush.

Under no circumstances should an abrasive cleaner or polish, or any cleaner containing ketones or esters, be used.

Any harsh chemical can seriously damage most coatings.

In the event of a noticeable spill, the affected area should be rinsed and cleaned as soon as possible.

Under no circumstances use strong solvents or solutions containing:

- Chlorinated hydrocarbons
- Alkaline cleaners (pH > 8)

- Esters
- Ketones
- Abrasive cleaner or polish

Cleaning using 70% Alcohol does not present any alteration

Desinfection

- Antibacterial spray
- Steam
- Washable at 60°
- Suitable for bleach use
- Suitable for alcohol use

Recommendations of use

- Avoid contact with extremely hot or cold objects
- Use of abrasive sponges or cloths
- Cleaning with abrasive, alkaline, acid, chlorine or solvent products.
- Withstands sudden changes in temperature



Maintenance

Always use clean, non-abrasive cloths, absorbent paper and sponges, as well as any other cleaning products or tools.

When possible, avoid leaving stains on the laminate surface for a long time - the sooner you clean, the better the end result!

To avoid marks on the surface, always remove the detergent, rinse and dry with a cloth.

Always pre-test new solvents or detergents in a hidden corner of the surface.

Do not use detergents that contain strong acids or bases such as descalers with formic acid or amino sulfate, drain cleaners, hydrochloric acid, silver cleaning, solutions, oven detergents, bleach products.

Always wear gloves when using organic solvents, cross ventilate the room and follow the most common hygiene and safety regulations (ask for the safety data sheet)

The LAMCOHPL surface is particularly suitable for contact with food and does not promote the growth of bacteria and spores. That is why it is extremely important to keep the laminate surface perfectly clean.

Desinfection

- Antibacterial spray
- Steam
- Washable at 60°
- Suitable for bleach use
- Suitable for alcohol use



Recommendations of use

- Use coasters under hot objects
- Do not drag objects, lift them
- Avoid contact with extremely hot or cold objects
- Remove and immediately dry any liquid that accidentally falls on the surface.
- Place a protective envelope to write
- Use of paper towels. They can scratch the surface
- Always clean in the direction of the streak
- Allow liquids to come into contact with the wood
- Use of abrasive sponges or cloths
- Cleaning with abrasive, alkaline, acid, chlorine or solvent products.
- Use in covered outdoor spaces



Maintenance

Cleaning the glass requires soap and water, or specific glass cleaners. It is convenient to start at the edges and work your way towards the center. Do not use industrial soaps, aseptic, abrasive or highly alkaline cleaning products, they can stain the glass. Do not use petroleum products such as gasoline or liquid fuel. To dry the glass after washing, you can use fiber-free paper or a non-abrasive cloth that leaves no residue. The use of demineralised water is also recommended, which does not contain minerals that settle on the surface when drying. Clean in small areas and examine the surface frequently to ensure that no damage has occurred. Decals are removed with acetone or nail polish remover. Use a toothbrush or hot soapy water to remove debris.

Desinfection

- Steam
- Washable at 60°
- Suitable for bleach use
- Suitable for use with diluted alcohol



Recommendations of use

- Use coasters under hot objects
- Do not drag objects, lift them
- Avoid contact with extremely hot or cold objects
- Remove and immediately dry any liquid that accidentally falls on the surface.
- Place a protective envelope to write
- Use of paper towels. They can scratch the surface
- Use of abrasive sponges or cloths
- Cleaning with abrasive, alkaline, acid, chlorine or solvent products.
- Use in covered outdoor spaces
- Withstands sudden changes in temperature

NATURAL WOOD



Maintenance

To remove stains on wood produced by daily use, it is recommended to clean gently with a cloth dampened with water and neutral soap, then dry with a dry cloth. Do not apply too much pressure to avoid altering the finish of the surfaces.

Do not use products containing acetone, alcohol, ammonia, bleach, thinners and in general abrasive cleaning products or wax. Abrasive products dull the surface and eventually remove the enamel, nor is it recommended to use spray products. Avoid using oils or creams to clean furniture since they contain silicon that penetrates the wood and can cause the veneer or paint to peel or discolor.

Being a natural material, it is not designed to be exposed to the exterior such as terraces or squares without a covered area.

To remove stains on wood produced by daily use, it is recommended to clean gently with a cloth dampened with water and neutral soap, then dry with a dry cloth. Do not apply too much pressure to avoid altering the finish of the surfaces.

Desinfection

- Antibacterial spray
- Steam
- Washable at 60°
- Suitable for bleach use
- Suitable for alcohol use

Recommendations of use

- ✓ Use coasters under hot objects
- ✓ Do not drag objects, lift them
- ✓ Avoid contact with extremely hot or cold objects
- ✓ Remove and immediately dry any liquid that accidentally falls on the surface.
- ✓ Place a protective envelope to write
- ✗ Place near radiators, air conditioning vents, humidifiers, etc.
- ✗ Expose the furniture to direct sunlight.
- ✓ Always clean in the direction of the streak
- ✗ Allow liquids to come into contact with the wood
- ✗ Use of abrasive sponges or cloths
- ✗ Cleaning with abrasive, alkaline, acid, chlorine or solvent products.
- ✗ Use in covered outdoor spaces
- ✗ Withstands sudden changes in temperature



METHACRYLATE



Maintenance

Clean with a special microfiber cloth for glass. Moistened with water and if it has any greasy stains with a drop of neutral soap. It can also be cleaned with a dilution of water and glass cleaner (85-15%)

Do not use abrasive or acid products. DO NOT apply hydroalcoholic solutions.

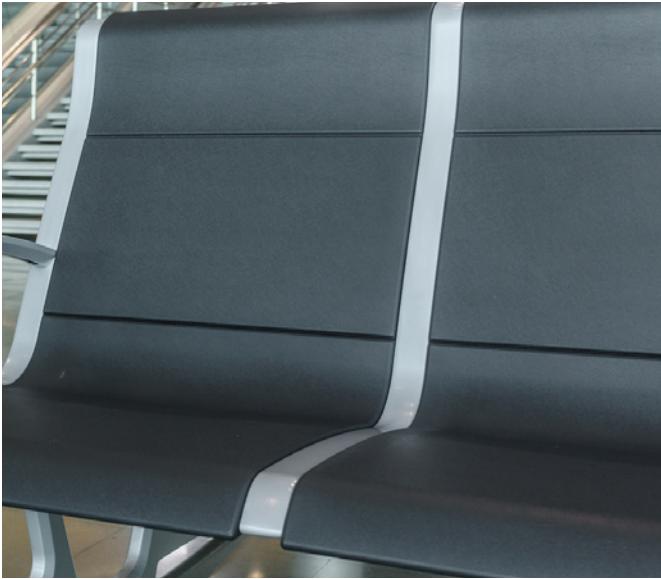
Desinfection

- Antibacterial spray
- Steam
- Washable at 60°
- Suitable for bleach use
- Suitable for alcohol use

Recommendations of use

- Avoid contact with extremely hot or cold objects
- Remove and immediately dry any liquid that accidentally falls on the surface.
- Use of paper towels. They can scratch the surface
- No Place near radiators, air conditioning vents, humidifiers, etc.
- No Expose the furniture to direct sunlight.
- Use of abrasive sponges or cloths
- Cleaning with abrasive, alkaline, acid, chlorine or solvent products.
- Use in covered outdoor spaces
- Withstands sudden changes in temperature

POLIURETANO - PUR



Maintenance

It must be taken into account that depending on the texture of the piece, the stains will set more or less, which will make cleaning it more difficult.

The least harmful cleaning products would be sanitary cleaners (and if they contain HCl not exceeding 2%). May also contain 20% hydrogen peroxide

It must be taken into account that for mold-lacquered PU parts, the release agent is on the surface of the part and can be easily modified by cleaning agents and especially by degreasing organic solvents such as acetone and heptane among others, changing the brightness of the tested piece.

Desinfection

- ✗ Antibacterial spray
- ✗ Steam

Recommendations of use

- ✓ Remove and immediately dry any liquid that accidentally falls on the surface.
- ✓ No Place near radiators, air conditioning vents, humidifiers, etc.
- ✗ Use of abrasive sponges or cloths
- ✗ Cleaning with abrasive, alkaline, acid, chlorine or solvent products.
- ✓ Use in covered outdoor spaces
- ✗ Withstands sudden changes in temperature

THERMOPLASTIC



Recommendations of use

- ✓ Do not drag objects, lift them
- ✓ Avoid contact with extremely hot or cold objects
- ✓ Remove and immediately dry any liquid that accidentally falls on the surface.
- ✓ If the product does not have UV additive, it cannot be exposed to direct light
- ✗ Use of abrasive sponges or cloths
- ✗ Cleaning with abrasive, alkaline, acid, chlorine or solvent products.
- ✓ Use in covered outdoor spaces
- ✗ Withstands sudden changes in temperature

Maintenance

Cleaning with standard soaps and not very acidic or abrasive.

If the plastic is polypropylene (PP) and the stain is more intense, a mild solvent could be used.

Desinfection

- ✗ Antibacterial spray
- ✗ Steam
- ✗ Washable at 60°
- ✗ Suitable for bleach use

PAINTED METAL / ALUMINUM



Maintenance

Wash regularly with a warm water solution of non-abrasive detergent with a pH between 5 and 8.

Surfaces must be thoroughly rinsed with clean water after washing to remove all residue.

All surfaces should be cleaned with a soft cloth / sponge or nothing harder than a soft, natural bristle brush.

Under no circumstances should an abrasive cleaner or polish, or any cleaner containing ketones or esters, be used.

Any harsh chemical can seriously damage most coatings.

In the event of a noticeable spill, the affected area should be rinsed and cleaned as soon as possible.

Under no circumstances use strong solvents or solutions containing:

- Chlorinated hydrocarbons
- Alkaline cleaners (pH > 8)
- Esters
- Ketones
- Abrasive cleaner or polish

Cleaning using 70% Alcohol does not present any alteration

Desinfection

- Steam
- Washable at 60°
- Suitable for bleach use
- Suitable for alcohol use

Recommendations of use

- Remove and immediately dry any liquid that accidentally falls on the surface.
- Use of abrasive sponges or cloths
- Cleaning with abrasive, alkaline, acid, chlorine or solvent products.
- Withstands sudden changes in temperature





Maintenance

Regular cleaning has always been recommended as a way to keep fabrics looking good for longer, with a few simple guidelines:

Vacuum fabrics regularly to avoid accumulation of dust and dirt on the fabric that can act as an aggravating factor and cause fabrics to wear out prematurely.

Act on the stains quickly, clean any excess liquid, before they impregnate or stain the fabric. If necessary, use special soap for textiles or warm water and liquid soap. Be careful not to overload textiles, especially wool, always make sure to wring out the clean cloth soaked in soapy water.

For better cleaning, wool, polyester and Trevira CS can be dry or steam cleaned. Trevira CS polyester is also machine washable if the upholstery is removable. Polypropylene should not be machine washed, dry or steam cleaned (it should be cleaned with bleach, in the same way as polyester).

Cleaning

- Vacuum cleaner
- Soap and water
- Dry cleaning
- Steam
- Washable at 60°
- Suitable for cleaning with bleach
- Ethanol (diluted 1:10)

Desinfection

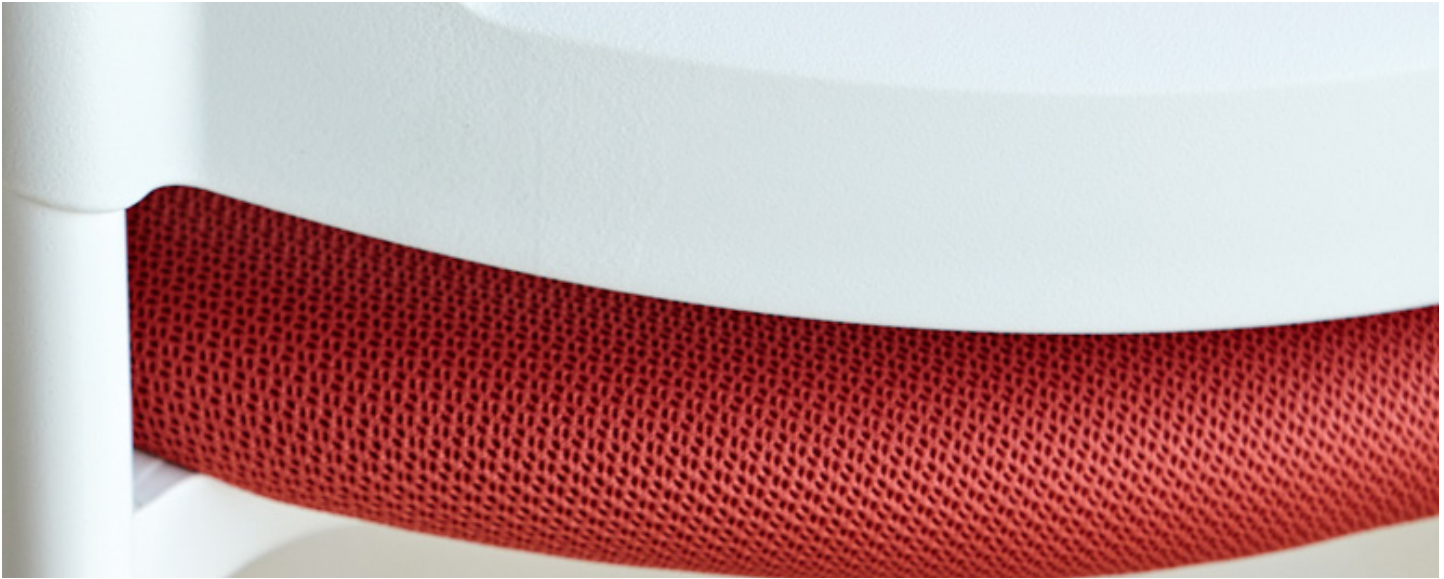
- Soap and water
- Steam
- Bleach - General Disinfection (diluted 1:10)
- Bleach - Superior Disinfection (diluted 1:4)
- Alcohol / Antibacterial spray / Wipes
- Washable at 60°C
- Ethanol (diluted 1:10)

Recommendations of use

- Avoid contact with extremely hot or cold objects
- Remove and immediately dry any liquid that accidentally falls on the surface.
- No Expose the furniture to direct sunlight.
- Use of abrasive sponges or cloths
- Do not allow water to soak into the foam under the upholstery.
- Cleaning with abrasive, alkaline, acid, chlorine or solvent products.
- Test the cleaning products in an inconspicuous place.



POLYESTER



Maintenance

Regular cleaning has always been recommended as a way to keep fabrics looking good for longer, with a few simple guidelines:

Vacuum fabrics regularly to avoid accumulation of dust and dirt on the fabric that can act as an aggravating factor and cause fabrics to wear out prematurely.

Act on the stains quickly, clean any excess liquid, before they impregnate or stain the fabric. If necessary, use special soap for textiles or warm water and liquid soap. Be careful not to overload textiles, especially wool, always make sure to wring out the clean cloth soaked in soapy water.

For better cleaning, wool, polyester and Trevira CS can be dry or steam cleaned. Trevira CS polyester is also machine washable if the upholstery is removable. Polypropylene should not be machine washed, dry or steam cleaned (it should be cleaned with bleach, in the same way as polyester).

Cleaning

- Vacuum cleaner
- Soap and water
- Dry cleaning
- Steam
- Washable at 60°
- Suitable for cleaning with bleach
- Ethanol (diluted 1:10)

Desinfection

- ✓ Soap and water
- ✓ Steam
- ✓ Bleach - General Disinfection (diluted 1:10)
- ✗ Bleach - Superior Disinfection (diluted 1:4)
- ✓ Alcohol / Antibacterial spray / Wipes
- ✓ Washable at 60°C
- ✓ Ethanol (diluted 1:10)

Recommendations of use

- ✓ Avoid contact with extremely hot or cold objects
- ✓ Remove and immediately dry any liquid that accidentally falls on the surface.
- ✓ No Expose the furniture to direct sunlight.
- ✗ Use of abrasive sponges or cloths
- ✓ Do not allow water to soak into the foam under the upholstery.
- ✗ Cleaning with abrasive, alkaline, acid, chlorine or solvent products.
- ✓ Test the cleaning products in an inconspicuous place.



TREVIRA CS



Maintenance

Regular cleaning has always been recommended as a way to keep fabrics looking good for longer, with a few simple guidelines:

Vacuum fabrics regularly to avoid accumulation of dust and dirt on the fabric that can act as an aggravating factor and cause fabrics to wear out prematurely.

Act on the stains quickly, clean any excess liquid, before they impregnate or stain the fabric. If necessary, use special soap for textiles or warm water and liquid soap. Be careful not to overload textiles, especially wool, always make sure to wring out the clean cloth soaked in soapy water.

For better cleaning, wool, polyester and Trevira CS can be dry or steam cleaned. Trevira CS polyester is also machine washable if the upholstery is removable. Polypropylene should not be machine washed, dry or steam cleaned (it should be cleaned with bleach, in the same way as polyester).

Cleaning

- Vacuum cleaner
- Soap and water
- Dry cleaning
- Steam
- Washable at 60°
- Suitable for cleaning with bleach
- Ethanol (diluted 1:10)

Desinfection

- ✓ Soap and water
- ✗ Steam
- ✓ Bleach - General Disinfection (diluted 1:10)
- ✓ Bleach - Superior Disinfection (diluted 1:4)
- ✓ Alcohol / Antibacterial spray / Wipes
- ✓ Washable at 60°C
- ✗ Ethanol (diluted 1:10)

Recommendations of use

- ✓ Avoid contact with extremely hot or cold objects
- ✓ Remove and immediately dry any liquid that accidentally falls on the surface.
- ✓ No Expose the furniture to direct sunlight.
- ✗ Use of abrasive sponges or cloths
- ✓ Do not allow water to soak into the foam under the upholstery.
- ✗ Cleaning with abrasive, alkaline, acid, chlorine or solvent products.
- ✓ Test the cleaning products in an inconspicuous place.





Maintenance

Regular cleaning has always been recommended as a way to keep fabrics looking good for longer, with a few simple guidelines:

Vacuum fabrics regularly to avoid accumulation of dust and dirt on the fabric that can act as an aggravating factor and cause fabrics to wear out prematurely.

Act on the stains quickly, clean any excess liquid, before they impregnate or stain the fabric. If necessary, use special soap for textiles or warm water and liquid soap. Be careful not to overload textiles, especially wool, always make sure to wring out the clean cloth soaked in soapy water.

Cleaning

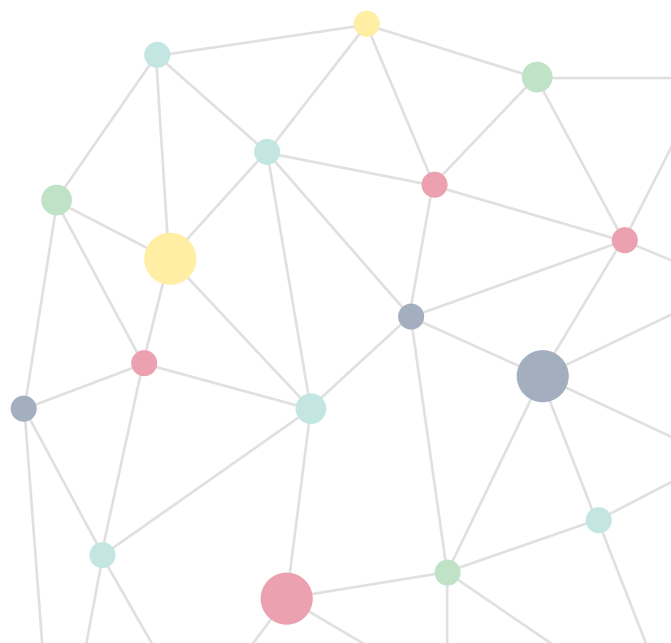
- Vacuum cleaner
- Soap and water
- Dry cleaning
- Steam
- Washable at 60°
- Suitable for cleaning with bleach
- Ethanol (diluted 1:10)

Desinfection

- ✓ Soap and water
- ✗ Steam
- ✓ Bleach - General Disinfection (diluted 1:10)
- ✓ Bleach - Superior Disinfection (diluted 1:4)
- ✗ Alcohol / Antibacterial spray / Wipes
- ✗ Washable at 60°C
- ✗ Ethanol (diluted 1:10)

Recommendations of use

- ✓ Avoid contact with extremely hot or cold objects
- ✓ Remove and immediately dry any liquid that accidentally falls on the surface.
- ✓ No Expose the furniture to direct sunlight.
- ✗ Use of abrasive sponges or cloths
- ✓ Do not allow water to soak into the foam under the upholstery.
- ✗ Cleaning with abrasive, alkaline, acid, chlorine or solvent products.
- ✓ Test the cleaning products in an inconspicuous place.



LEATHER



Maintenance

Regular cleaning has always been recommended as a way to keep fabrics looking good for longer, with a few simple guidelines:

Vacuum fabrics regularly to avoid accumulation of dust and dirt on the fabric that can act as an aggravating factor and cause fabrics to wear out prematurely.

Act on the stains quickly, clean any excess liquid, before they impregnate or stain the fabric. If necessary, use special soap for textiles or warm water and liquid soap. Be careful not to overload textiles, especially wool, always make sure to wring out the clean cloth soaked in soapy water.

Cleaning

- Vacuum cleaner
- Soap and water
- Dry cleaning
- Steam
- Washable at 60°
- Suitable for cleaning with bleach
- Ethanol (diluted 1:10)

Desinfection

- ✓ Soap and water
- ✗ Steam
- ✗ Bleach - General Disinfection (diluted 1:10)
- ✗ Bleach - Superior Disinfection (diluted 1:4)
- ✗ Alcohol / Antibacterial spray / Wipes
- ✗ Washable at 60°C
- ✗ Ethanol (diluted 1:10)

Recommendations of use

- ✓ Avoid contact with extremely hot or cold objects
- ✓ Remove and immediately dry any liquid that accidentally falls on the surface.
- ✓ No Expose the furniture to direct sunlight.
- ✗ Use of abrasive sponges or cloths
- ✓ Do not allow water to soak into the foam under the upholstery.
- ✗ Cleaning with abrasive, alkaline, acid, chlorine or solvent products.
- ✓ Test the cleaning products in an inconspicuous place.





ACTIU TECHNOLOGY PARK

DESIGN & ARCHITECTURE

Space management and design
 Products. Own patents
 Communication

SUSTAINABILITY

Sustainable production
 Product. Eco-design
 Services, efficient logistics system
 Actiu Technology Park, certified LEED®
 Platinum

MANUFACTURER

We are manufacturers
 Domain raw materials and processes
 Technology and Innovation
 Standardized and specific solutions

GLOBAL COVERAGE

Presence in more than 90 countries
 Global equipment solutions. Corporate, Health,
 Education, Contract, Transport.

CERTIFICATES AND REFERENCES

ACTIU products fulfill all demands about management, quality and sustainability to provide extra value to the projects using recycled materials to get the recyclable final product.



Actiu, the first industrial company
 in the world to obtain the
WELL v2 and LEED Platinum Certification





ACTIU: 50 YEARS DESIGNING PUBLIC SPACES AND WORKSPACES.

Actiu is an industrial company working within the installation sector and specialising in the manufacture of furniture. Actiu's flexibility and productive capacity enable the company to carry out comprehensive equipment projects worldwide, providing solutions that favour the wellbeing of people.

ACTIU, 50 AÑOS DISEÑANDO ESPACIOS PÚBLICOS Y DE TRABAJO.

Actiu es una empresa con una trayectoria industrial en el sector de la instalación, especializada en la creación de mobiliario, cuya flexibilidad y capacidad productiva permite desarrollar proyectos de equipamiento global a nivel internacional aportando soluciones que ofrezcan el bienestar de las personas.

ACTIU, 50 ANS DE CONCEPTION D'ESPACES PUBLICS ET DE TRAVAIL.

Actiu est une entreprise dotée d'un parcours à caractère industriel dans le secteur de l'installation, qui se spécialise dans la création de mobilier, et dont la flexibilité et la capacité de production permettent de développer des projets d'équipement global à un niveau international, tout en apportant des solutions qui puissent offrir du bien-être aux personnes.

ACTIU, 50 JAHRE DESIGN UND PRODUKTION VON MÖBELN FÜR ÖFFENTLICHE EINRICHTUNGEN UND ARBEITSRÄUME.

Unsere ständige Forschung, Weiterentwicklung, Flexibilität und Erfahrung ermöglichen es uns, Projekte im privaten und öffentlichen Bereich der verschiedensten Sektoren auf nationaler und internationaler Ebene durchzuführen. Stillstand ist uns fremd. Uns treibt das Bedürfnis an, näher an den Menschen zu sein und Lösungsmöglichkeiten zu entwickeln, die den Endnutzern Wohlgefühl bieten.

ACTIU reserves the right to carry out technical, dimensional and finishing modifications that it considers appropriate with respect to the information detailed in this document, so please check before confirming your orders.

ACTIU se reserva el derecho de llevar a cabo las modificaciones técnicas, dimensionales y de acabados que estime conveniente respecto a la información detallada en este documento, por el que se ruega verificación antes de confirmar sus pedidos.



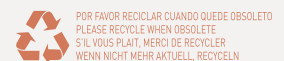
We dream to go beyond our own immediate reality. We design to mature our desires. We walk because only our initiative changes the world and breaks new ground. We move ourselves by being ourselves without the fear of underperforming against our own expectations and goals.

D. Vicente Berbegal Pérez

President and Founder of the Actiu Group.



ACTIU, National Design Award 2017
ACTIU, Premio Nacional de Diseño 2017





www.actiu.com